

HISTORY

At this issue I want to present stuff about Jagadis Chandra Bose, an Indian inventor. "J.C. Bose was at least 60 years ahead of his time", as Sir Neville Mott, Nobel Laureate, remarked in 1977. Let's remembered that great man!

The Work of Jagadis Chandra Bose: 100 Years of MM-Wave Research

© 1997 IEEE. Reprinted, with permission, from:

IEEE Transactions on Microwave Theory and Techniques, December 1997, Vol. 45, No. 12, pp.2267-2273.

[D.T. Emerson](#)
[National Radio Astronomy Observatory^{\(1\)}](#)

949 N. Cherry Avenue
Tucson, Arizona 85721

E-mail: demerson@nrao.edu

Based on material presented at the IEEE-MTT-S International Microwave Symposium in Denver, CO, June 8-13, 1997; this appeared in the 1997 IEEE MTT-S International Microwave Symposium Digest, Volume 2, ISSN 0149-645X, pp.553-556. The full article was published in the IEEE Transactions on Microwave Theory and Techniques, December 1997, Vol. 45, No. 12, pp.2267-2273. This WWW version has some additional photographs, and color images. Copyright held by the author and the IEEE.

⁽¹⁾[The National Radio Astronomy Observatory](#) is a facility of the National Science Foundation, operated under cooperative agreement by Associated Universities, Inc.

ABSTRACT

Just one hundred years ago, J.C. Bose described to the Royal Institution in London his research carried out in Calcutta at millimeter wavelengths. He used waveguides, horn antennas, dielectric lenses, various polarizers and even semiconductors at frequencies as high as 60 GHz; much of his original equipment is still in existence, now at the Bose Institute in Calcutta. Some concepts from his original 1897 papers have been incorporated into a new 1.3-mm multi-beam receiver now in use on the NRAO 12 Meter Telescope.

INTRODUCTION

James Clerk Maxwell's equations predicting the existence of electromagnetic radiation propagating at the speed of light were made public in 1865; in 1888 Hertz had demonstrated generation of electromagnetic waves, and that their properties were similar to those of light [1]. Before the start of the twentieth century, many of the concepts now familiar in microwaves had been developed [2,3]: the list includes the cylindrical parabolic reflector, dielectric lens, microwave absorbers, the cavity radiator, the radiating iris and the pyramidal electromagnetic horn. Round, square and

rectangular waveguides were used, with experimental development anticipating by several years Rayleigh's 1896 theoretical solution [4] for waveguide modes. Many microwave components in use were quasi-optical - a term first introduced by Oliver Lodge [5]. Righi in 1897 published a treatise on microwave optics [6].

Hertz had used a wavelength of 66 cm; other post-Hertzian pre-1900 experimenters used wavelengths well into the short cm-wave region, with Bose in Calcutta [7,8] and Lebedew in Moscow [9] independently performing experiments at wavelengths as short as 5 and 6 mm.

THE RESEARCHES OF J.C. BOSE

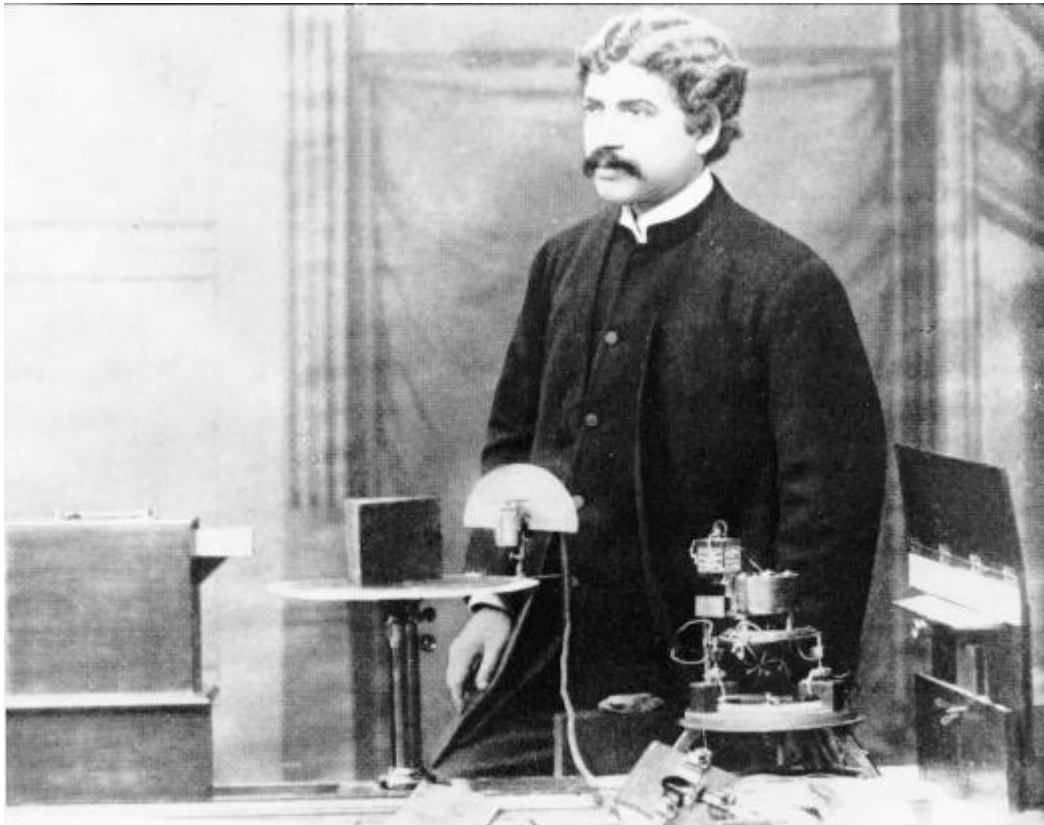
Jagadis Chandra Bose [10,11,12] was born in India in 1858. He received his education first in India, until in 1880 he went to England to study medicine at the University of London. Within a year he moved to Cambridge to take up a scholarship to study Natural Science at Christ's College Cambridge. One of his lecturers at Cambridge was Professor Rayleigh, who clearly had a profound influence on his later work. In 1884 Bose was awarded a B.A. from Cambridge, but also a B.Sc. from London University. Bose then returned to India, taking up a post initially as officiating professor of physics at the Presidency College in

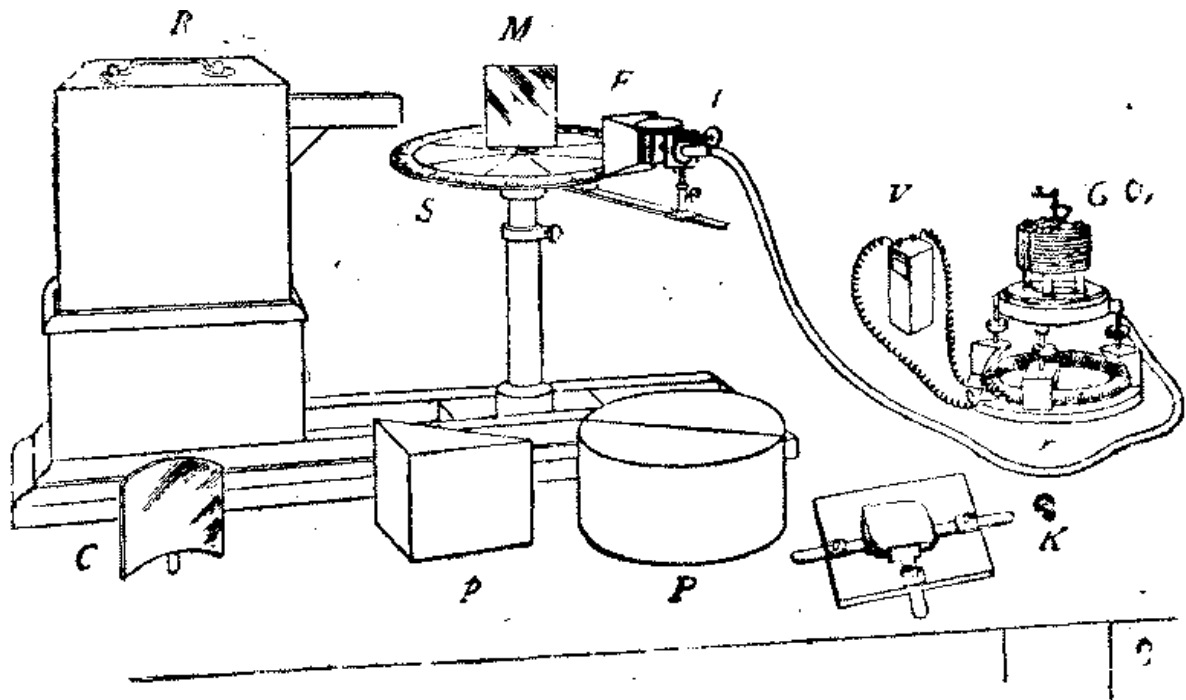
Calcutta. Following the example of Lord Rayleigh, Jagadis Bose made extensive use of scientific demonstrations in class; he is reported as being extraordinarily popular and effective as a teacher. Many of his students at the Presidency College were destined to become famous in their own right - for example S.N. Bose, later to become well known for the Bose-Einstein statistics.

A book by Sir Oliver Lodge, "Heinrich Hertz and His Successors," impressed Bose. In 1894, J.C. Bose converted a small enclosure adjoining a bathroom in the Presidency College into a laboratory. He carried out experiments involving refraction, diffraction and polarization. To receive the radiation, he used a variety of different junctions connected to a highly sensitive galvanometer. He plotted in detail the voltage-current characteristics of his junctions, noting their non-linear characteristics. He developed the use of galena crystals for making receivers, both for short wavelength radio waves and for white and ultraviolet light. Patent rights for their use in detecting electromagnetic radiation were granted to him in 1904. In 1954 Pearson and Brattain [14] gave priority to Bose for the use of a semi-conducting crystal as a detector of radio waves. Sir Neville Mott, Nobel Laureate in 1977 for his own contributions to solid-state electronics, remarked [12] that "J.C. Bose was at least 60 years ahead of his time" and "In fact, he had anticipated the existence of P-type and N-type semiconductors."

In 1895 Bose gave his first public demonstration of electromagnetic waves, using them to ring a bell remotely and to explode some gunpowder. In 1896 the Daily Chronicle of England reported: "The inventor (J.C. Bose) has transmitted signals to a distance of nearly a mile and herein lies the first and obvious and exceedingly valuable application of this new theoretical marvel." Popov in Russia was doing similar experiments, but had written in December 1895 that he was still entertaining the hope of remote signalling with radio waves. The first successful wireless signalling experiment by Marconi on Salisbury Plain in England was not until May 1897. The 1895 public demonstration by Bose in Calcutta predates all these experiments. Invited by Lord Rayleigh, in 1897 Bose reported on his microwave (millimeter-wave) experiments to the Royal Institution and other societies in England [8]. The wavelengths he used ranged from 2.5 cm to 5 mm. In his presentation to the Royal Institution in January 1897 Bose speculated [see p.88 of ref.8] on the existence of electromagnetic radiation from the sun, suggesting that either the solar or the terrestrial atmosphere might be responsible for the lack of success so far in detecting such radiation - solar emission was not detected until 1942, and the 1.2 cm atmospheric water vapor absorption line was discovered during experimental radar work in 1944. Figure 1 shows J.C. Bose at the Royal Institution in London in January 1897; **Figure 2** shows a matching diagram, with a brief description of the apparatus.

Figure 1. J.C. Bose at the Royal Institution, London, 1897. [13]





R, radiator ; S, spectrometer-circle ; M, plane mirror ; C, cylindrical mirror ; p, totally reflecting prism ; P, semi-cylinders ; K, crystal-holder ; F, collecting funnel attached to the spiral spring receiver ; t, tangent screw, by which the receiver is rotated ; V, voltaic cell ; r, circular rheostat ; G, galvanometer.

Figure 2. Bose's apparatus demonstrated to the Royal Institution in London in 1897 [8]. Note the waveguide radiator on the transmitter at left, and that the "collecting funnel" (F) is in fact a pyramidal electromagnetic horn antenna, first used by Bose.

By about the end of the 19th century, the interests of Bose turned away from electromagnetic waves to response phenomena in plants; this included studies of the effects of electromagnetic radiation on plants, a topical field today. He retired from the Presidency College in 1915, but was appointed Professor Emeritus. Two years later the Bose Institute was founded. Bose was elected a Fellow of the Royal Society in 1920. He died in 1937, a week before his 80th birthday; his ashes are in a shrine at the Bose Institute in Calcutta.

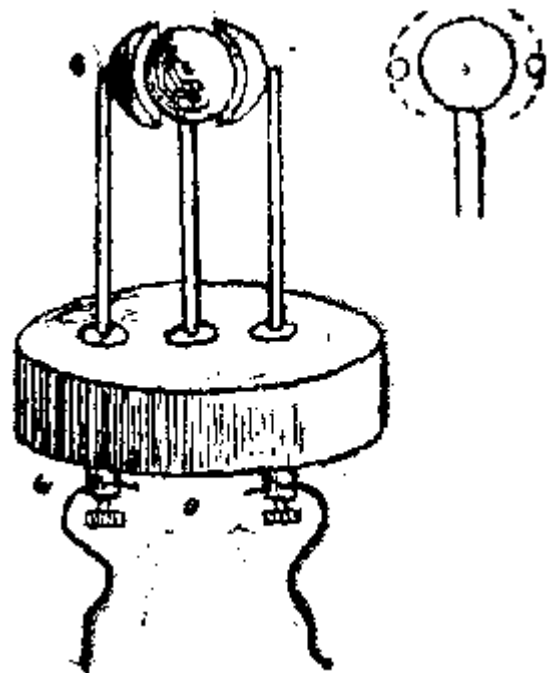
BOSE'S APPARATUS

Bose's experiments were carried out at the Presidency College in Calcutta, although for demonstrations he developed a compact portable version of the equipment, including transmitter, receiver and various microwave components. Some of his original equipment still exists, now at the Bose Institute in Calcutta. In 1985 the author was permitted by the Bose Institute to examine and photograph some of this original apparatus.

Figure 3 (a) shows Bose's diagram of one of his radiators, used for generating 5-mm radiation.

The Radiator

Figure 3(a)



Oscillation is produced by sparking between 2 hollow hemispheres and the interposed sphere. There is a bead of platinum on the inside surface of each hemisphere. For some experiments, a lens of glass or of sulphur was used to collimate the radiation - the first waveguide-lens antenna. The lens was designed according to the refractive index measured by Bose at the wavelength in use. **Figure 3(b)** shows Bose's drawing of such a radiator; the sparks occur between the two outer spheres to the inner sphere, at the focal point of the lens L at the right. Bose was able to measure the wavelength of his radiation with a reflecting diffraction grating made of metal strips [7].

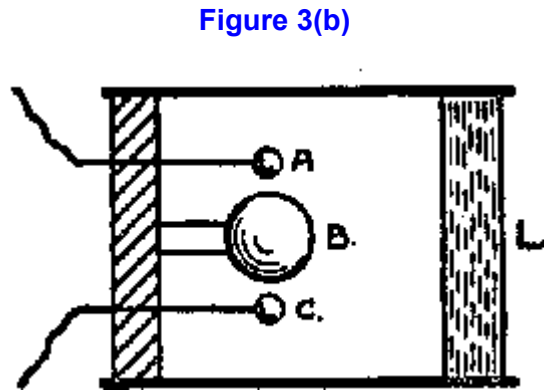


Figure 3(b)

Figure 4(a) is a photograph of one of his radiating antennas; part of the spark oscillations are generated inside the overmoded circular waveguide. A polarizing grid is built into the antenna, clearly visible at the radiating end of the waveguide. Figure 4(b) shows a closeup of the dual spark gaps used for the transmitter; the sparks are generated between the 2 outer spheres and the inner sphere. Figure 4(c) shows both a transmitting antenna (left) and the receiver (right), with a dual prism in between set on the experimental rotating table.

Figure 3 Bose's diagrams of his radiators. (a) shows the radiator used to generated 5-mm radiation, while (b) shows the arrangement with a lens L at the exit of the waveguide [2]. In some designs the mounting stems for the outer spheres could be inclined to adjust the dimension of the spark gaps.



Figure 4(a)

One of Bose's transmitter antennas (being held on the right of the picture). Note the polarizing grid; the spark gap is just visible behind the grid. In the background behind this antenna part of the high voltage equipment used to generate the spark can be seen. At the left of the picture is a receiving horn.



Figure 4(b): A closeup of the spark gaps normally mounted inside the transmitting antenna

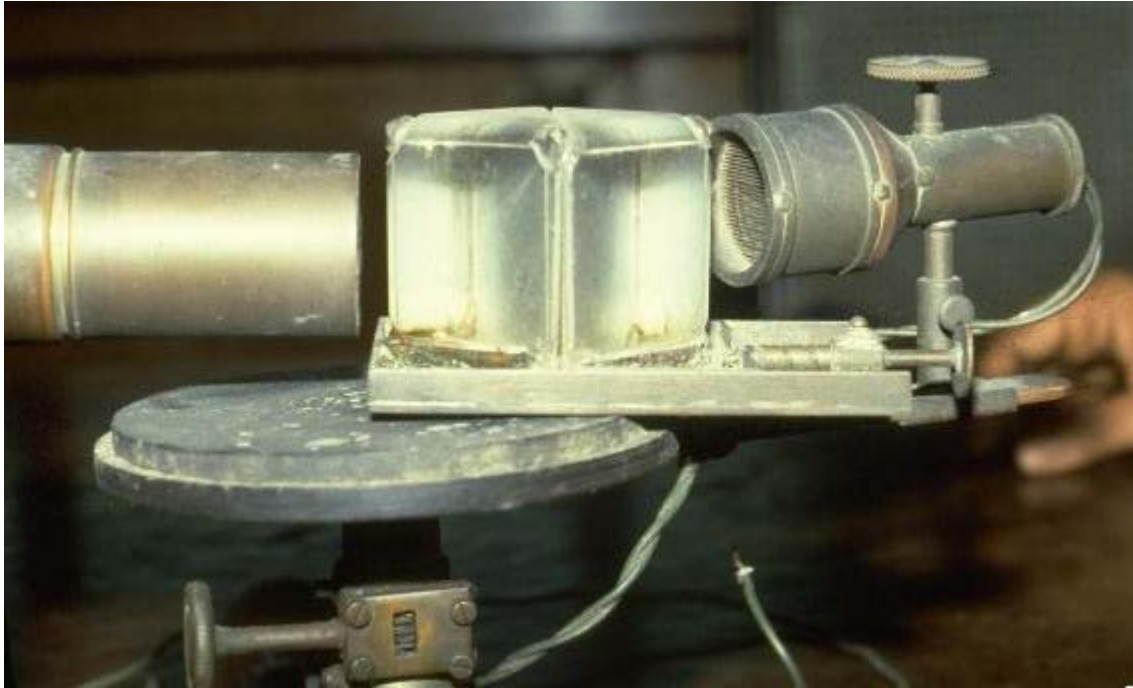


Figure 4(c): A complete setup showing the transmitting antenna at the left, with the receiving antenna at right. Note the adjustment screw on top of the receiving antenna, which is used to adjust the pressure of the point-contact detector (see Fig. 5). In the center is a rotating table (the "spectrometer circle" of Figure 2) on which various microwave components (prisms, lenses, grids, polarizers etc.) may be mounted for study. A dual-prism attenuator (see below) is shown in this photograph. The arrangement as shown is not yet properly aligned.

Figure 5 shows two of Bose's point contact detectors. In use, the detector would be placed inside an overmoded waveguide receiving antenna, very much like the transmitting antenna shown in Figure 4, and with a matching polarizing grid.

Bose measured the I-V characteristics of his junctions; an example characteristic curve of a "Single Point Iron Receiver" is shown in Figure 6. The junction consisted of a sharp point of iron, pressing against an iron surface, with pressure capable of fine adjustment. The different curves in **Figure 6** correspond to different contact pressures. Bose noted that the junction does not obey Ohm's law, and that there is a knee in the curve at approximately 0.45 volts; the junction becomes most effective at detection of short wavelength radiation when the corresponding bias voltage is applied. He made further measurements on a variety of junctions made of different materials, classifying the different materials into positive or

negative classes of substance. In one experiment he noted that increasing the applied voltage to the junction actually decreased the resulting current, implying a negative dynamic resistance [15].

Another of Bose's short-wavelength detectors is the spiral-spring receiver. A sketch of a receiver used for 5-mm radiation is shown in **Figure 7**; the spring pressure could be adjusted very finely in order to attain

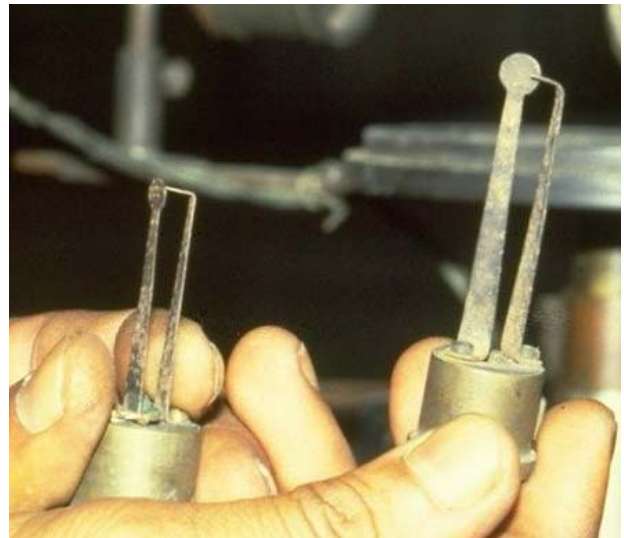


Figure 5. Two of Bose's point contact detectors, removed from the receiving antennas.

optimum sensitivity. The sensitive surface of the 5-mm receiver was 1 by 2 cm. The device has been described recently [3] as a "space-irradiated multi-contact semiconductor (using the natural oxide of the springs)." A surviving, somewhat larger, spiral spring receiver is shown in the photograph **Figure 8**. The springs are held in place by a sheet of glass, seen to be partly broken in this example.

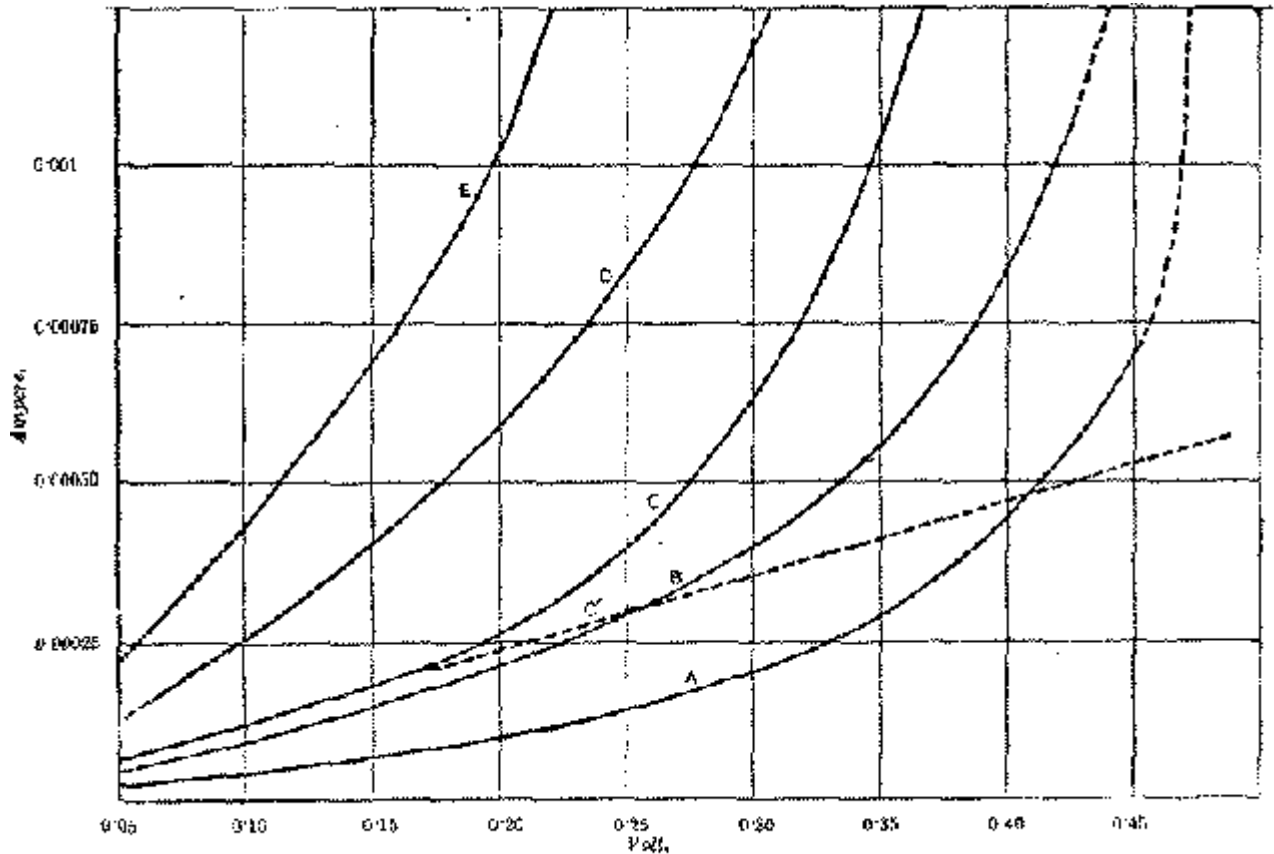


Fig. 52. Characteristic Curves of a Single Point Iron Receiver. A, B, C, D, E are different curves for different initial currents, C is the curve for a constant resistance.

Figure 6. The I-V characteristics measured by Bose for a Single Point Iron Receiver. Note the similarity to modern semiconductor junctions, with a knee voltage of about 0.4 volts.

Figure 9 is Bose's diagram of his polarization apparatus. The transmitter is the box at left, and a spiral spring receiver ('R') is visible on the right. One of the polarizers used by Bose was a cut-off metal plate grating, consisting of a book (Bradshaw's Railway Timetable, Figure 10) with sheets of tinfoil interleaved in the pages. Bose was able to demonstrate that even an ordinary book, without the tinfoil, is able to produce polarization of the transmitted beam. The pages act as parallel dielectric sheets separated by a small air gap.

Bose experimented with samples of jute in polarizing experiments. In one experiment, he made a twisted bundle of jute and showed that it could be used to rotate the plane of polarization. The modern equivalent component may be a twisted dielectric waveguide. He further used this to construct a macroscopic molecular model as an analogy to the rotation of polarization produced by liquids like sugar solutions. Figure 11 shows Bose's diagram of the jute twisted-fiber polarization rotator, and Figure 12 is a photograph of a surviving twisted-jute polarizer at the Bose Institute.

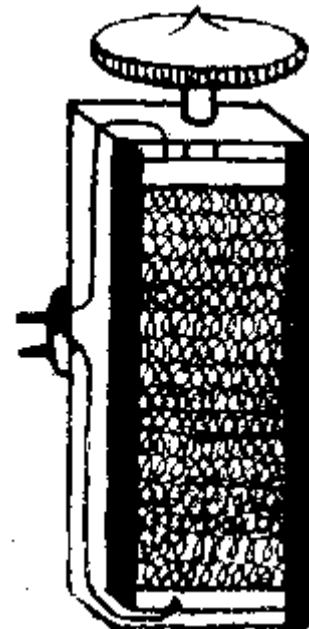


Figure 7. Bose's diagram of his spiral-spring receiver used for 5-mm radiation.

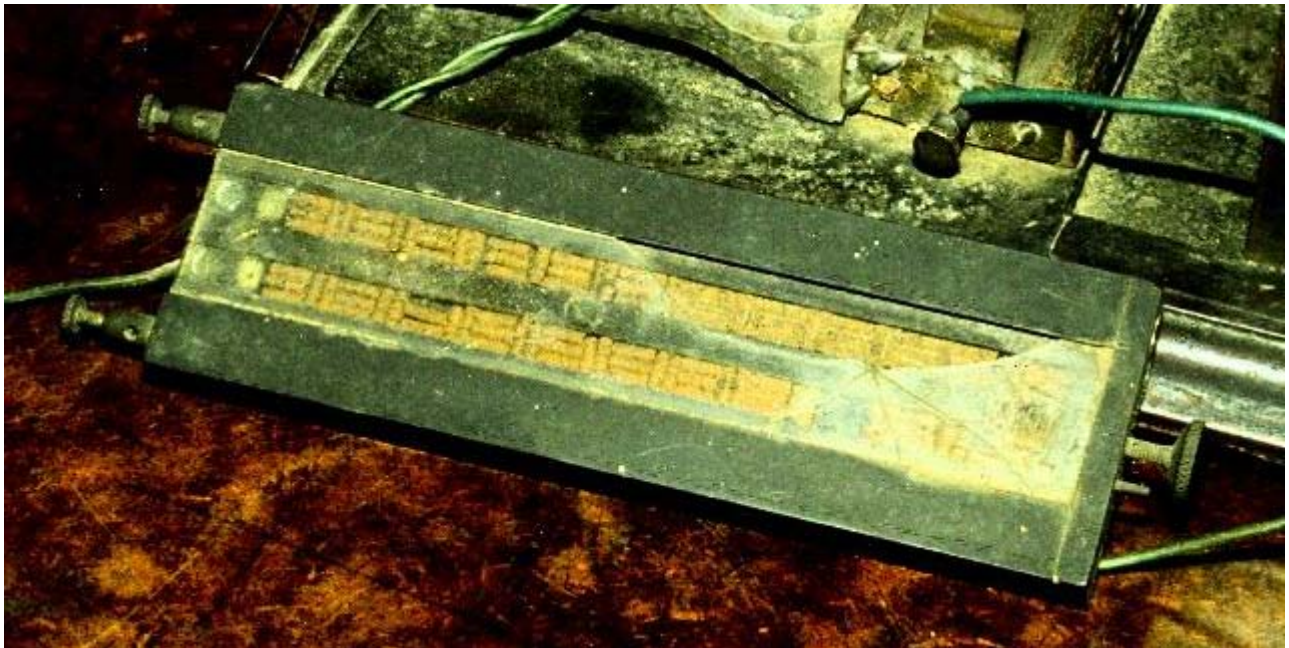
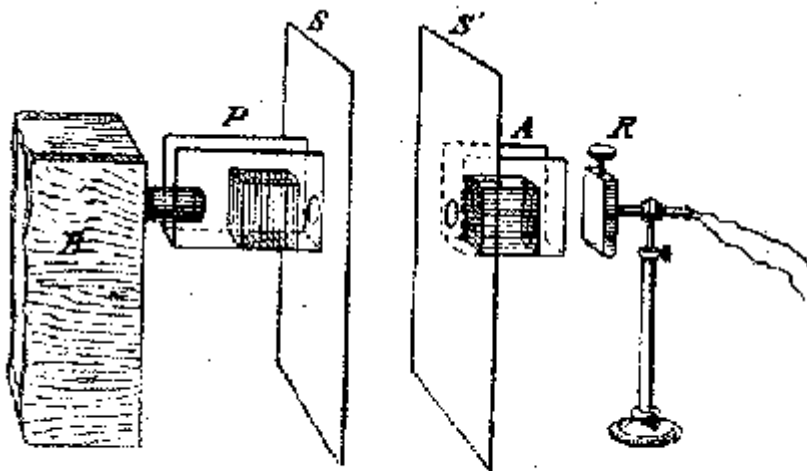


Figure 8. One of Bose's free-space radiation receivers, recently described [3] as a "space-irradiated multi-contact semiconductor (using the natural oxide of the springs)." The springs are kept in place in their tray by a sheet of glass, seen to be partly broken in this photograph.



Polarisation apparatus. B, the radiating box ; P, the polariser ; A, the analyser ; S, S', the screens ; R, the receiver.

Figure 9. Bose's diagram of his polarization apparatus. Note the spiral spring receiver 'R' to the right.

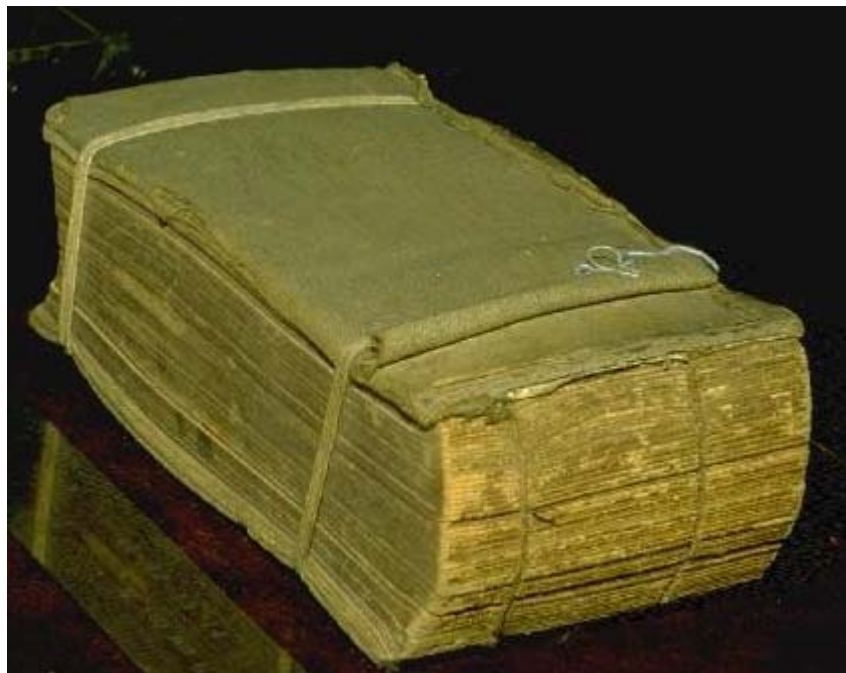
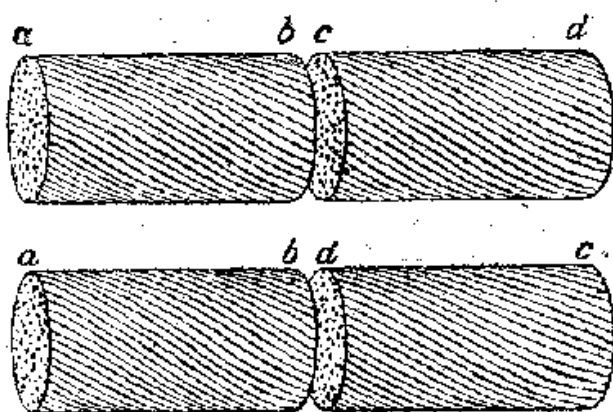


Figure 10. One of Bose's polarizers was a cut-off metal plate grating, consisting of a book (Bradshaw's Railway Timetable) with sheets of tinfoil interleaved in the pages.



Jute elements.

Figure 11. Bose's diagram of twisted-Jute polarization elements, used to simulate macroscopically the polarization effect of a certain sugar solutions.



Figure 12. One of the twisted-jute polarizers used by Bose.

THE DOUBLE-PRISM ATTENUATOR

Bose's investigations included measurement of refractive index of a variety of substances. He made dielectric lenses and prisms; examples are visible in Figures 1 and 2.

One investigation involved measurement of total internal reflection inside a dielectric prism, and the effect of a small air gap between two identical prisms. When the prisms are widely separated, total internal reflection takes place and the incident radiation is reflected inside the dielectric. When the 2 prisms

touch, radiation propagates unhindered through both prisms. By introducing a small air gap, the combination becomes a variable attenuator to incident radiation; this is illustrated in Bose's original diagram, shown in **Figure 13**. Bose investigated this prism attenuator experimentally; his results were published in the Proceedings of the Royal Society in November, 1897 [8]. Schaefer and Gross [16] made a theoretical study of the prism combination in 1910; the device has since been described in standard texts.

At the National Radio Astronomy Observatory in Tucson, Arizona a new multiple-feed receiver, operating at a wavelength of 1.3 mm, has recently been built and installed on the 12 Meter Telescope at Kitt Peak [17].

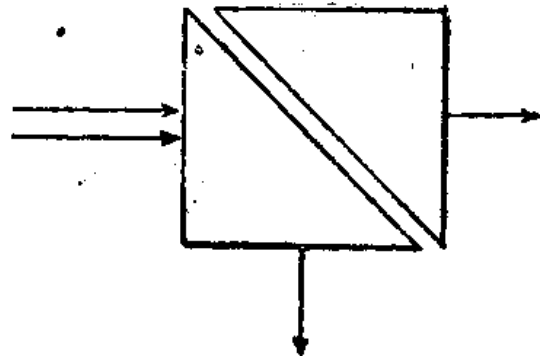


Figure 13. Bose's 1897 diagram of the double-prism attenuator.



Figure 14. One of Bose's original double-prism attenuators, with adjustable air gap.

The system is an 8-feed receiver, where the local oscillator is injected into the superconducting tunnel junction (SIS) mixers optically. With an SIS mixer receiver the power level of the injected local oscillator is critical; each of the 8 mixers requires independent local oscillator power adjustment. This is achieved by adjustable prism attenuators. **Figure 15** shows 4 of these 8 prism attenuators, installed on one side of the 8-feed system; this can be compared with Figure 14, which is a photograph taken at the Bose Institute in Calcutta in 1985, of an original prism system built by Bose.

CONCLUSIONS

Research into the generation and detection of millimeter waves, and the properties of substances at these wavelengths, was being undertaken in some detail one hundred years ago, by J.C. Bose in Calcutta. Many of the microwave components familiar today - waveguide, horn antennas, polarizers, dielectric lenses and

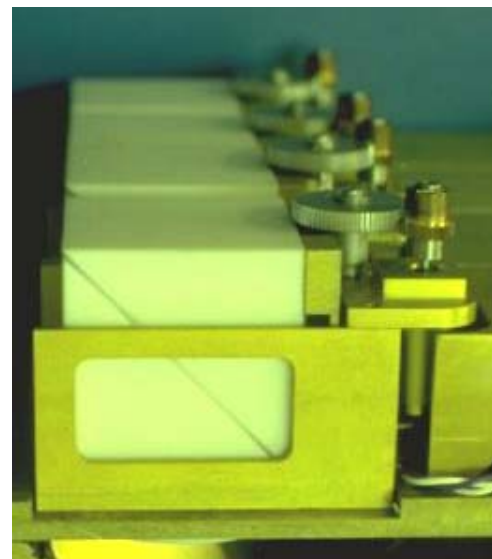


Figure 15. Four of the 8 double-prism attenuators used to control local oscillator injection into the NRAO 1.3-mm 8-beam receiver in use at the 12 Meter Telescope at Kitt Peak.

prisms, and even semiconductor detectors of electromagnetic radiation - were invented and used in the last decade of the nineteenth century. At about the end of the nineteenth century, many of the workers in this area simply became interested in other topics. Attention of the wireless experimenters of the time became focused on much longer wavelengths which eventually, with the help of the then unknown ionosphere, were able to support signalling at very much greater distances.

Although it appears that Bose's demonstration of remote wireless signalling has priority over Marconi, he was the first to use a semiconductor junction to detect radio waves, and he invented various now commonplace microwave components, outside of India he is rarely given the deserved recognition. Further work at millimeter wavelengths was almost nonexistent for nearly 50 years. J.C. Bose was at least this much ahead of his time.

ACKNOWLEDGEMENTS

I wish to thank the Bose Institute in Calcutta for help with material, and for permission in 1985 to photograph some of the original equipment of J.C. Bose, including the photographs shown from Figures 4 to 14 in this article. I thank Mrs. Nancy Clarke for help in preparing the manuscript.

REFERENCES

- [1] H. Hertz, *Electric Waves*. London: Macmillan and Co. Ltd., 1893. (Reprinted by Dover.)
- [2] John F. Ramsay, "Microwave Antenna and Waveguide Techniques before 1900," *Proc. IRE.*, Vol.46, No.2, pp. 405-415, February 1958.
- [3] K.L. Smith, "Victorian Microwaves," *Wireless World*, pp. 93-95, September 1979.
- [4] Lord Rayleigh, "On the passage of electric waves through tubes, or the vibrations of dielectric cylinders," *Phil. Mag.*, vol.43, pp.125-132, February 1897.
- [5] Oliver Lodge, *Signalling Across Space Without Wires*. Fleet Street, London, U.K.: "The Electrician" Printing & Publishing Company, 1908, 4th Ed., p. 83. (First edition published in 1894 under the title, *The Work of Hertz and His Successors*.)

[6] A. Righi, *L'Ottica delle Oscillazioni Elettriche*. Bologna, Italy: N. Zanichelli, 1897.

[7] J.C. Bose, "On the determination of the wavelength of electric radiation by a diffraction grating," *Proc. Roy. Soc.*, vol. 60, pp.167-178, 1897.

[8] J.C. Bose, *Collected Physical Papers*. New York, N.Y.: Longmans, Green and Co., 1927.

[9] P. Lebedew, "Ueber die Dopplbrechung der Strahlen elektrischer Kraft," *Annalen der Physik und Chemie*, series 3, vol.56, no.9, pp.1-17, 1895.

[10] Monoranjon Gupta, *Jagadis Chandra Bose, A Biography*. Bombay, India: Bhavan's Book University, 1952.

[11] Bimalendu Mitra, *Sir Jagadis Chandra Bose: A Biography for Students*. Hyderabad-Bombay-Calcutta, India: Orient Longman,Ltd., 1982.

[12] B. Mitra, "Early Microwave Engineering: J. C. Bose's Physical Researches during 1895-1900," *Science and Culture*, vol.50, pp.147-154, 1984.

[13] Photograph from *Acharya Jagadis Chandra Bose, Birth Centenary, 1858-1958*. Calcutta: published by the Birth Centenary Committee, printed by P.C. Ray, November 1958.

[14] G.L. Pearson, and W.H. Brattain, "History of Semiconductor Research," *Proc. IRE*, 43, pp.1794-1806, 1955.

[15] J.C. Bose, "On the Change of Conductivity of Metallic Particles under Cyclic Electromotive Variation," originally presented to the British Association at Glasgow, September 1901, reproduced in *Collected Physical Papers*, J.C. Bose, Ed. New York, N.Y.: Longmans, Green and Co., 1927.

[16] C. Schaefer and G. Gross, "Untersuchungen ueber die Totalreflexion," *Annalen der Physik*, vol 32, p.648, 1910.

[17] J.M. Payne & P.R. Jewell, "The Upgrade of the NRAO 8-beam Receiver," in *Multi-feed Systems for Radio Telescopes*, D.T. Emerson & J.M. Payne, Eds. San Francisco: ASP Conference Series, 1995, vol. 75, p.144.

I want to present for you some more info about Jagadis Chandra Bose, so, go to the next page.

I.G.