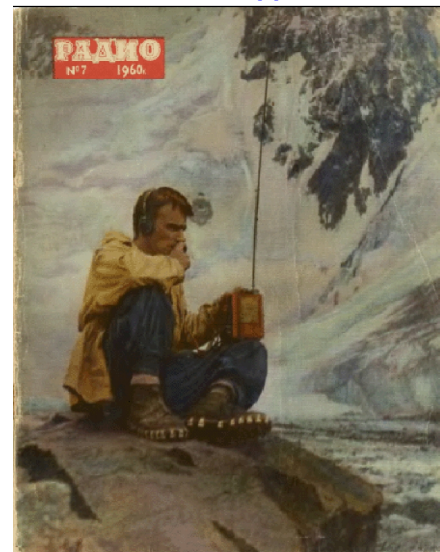


TV Ferrite Magnetic Loop Antenna

P. Trifonov
Credit Line: Radio # 7, 1960, pp.: 29- 30

The Ferrite Magnetic Loop Antenna works fine at places with heavy reflected signals-near TV transmitters. It allows get clear reception. Antenna made on a ferrite rod with permeability 600. Such ferrite rod use to for internal LW- MW antennas in transistor radio. Antenna has band-pass not less the 8- MHz because of the losses in the ferrite on the TV- Frequencies. **Figure 1** shows the schematic of the antenna. Left design is for one- band antenna and right design is for two- band antenna. Inductor L1 is a coupling loop with TV. It contains 2 turns, with gap between turns 7- mm. Inductors L2 and L3 are tuned on to working TV- Band. The inductor should have 4- 5 turns (length 11- mm) for 1- 2 TV Channels, 3- 4 turns (length 10- mm) for 3- TV- Channel, 2 turns for 4- TV- Channel, 1- 2 turns for 5- TV- Channel. The antenna would work well for FM- reception when would be tuned to the FM- frequencies. Trimmer capacitors C1 and C2 have 6... 25- pF.



Radio # 7, 1960

Figure 2 shows design of the antenna.

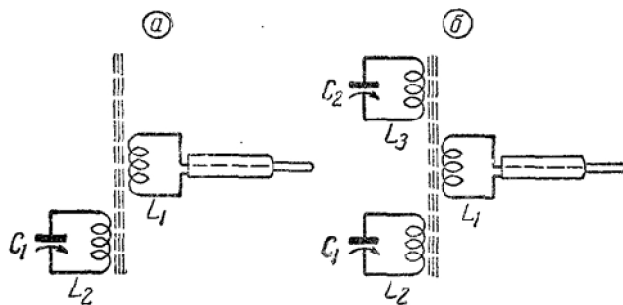


Figure 1 Schematic of the TV Ferrite Magnetic Loop Antenna

Рис. 2. Общий вид антенны-приставки.

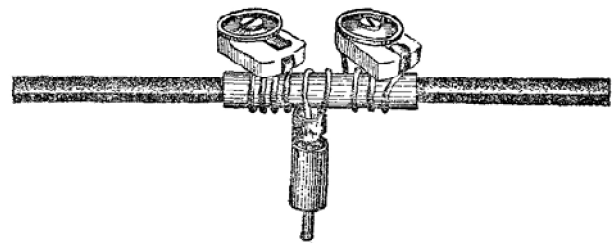


Figure 2 Design of the TV Ferrite Magnetic Loop Antenna

Header of the Article

ТЕЛЕВИЗИОННАЯ МАГНИТНАЯ АНТЕННА-ПРИСТАВКА